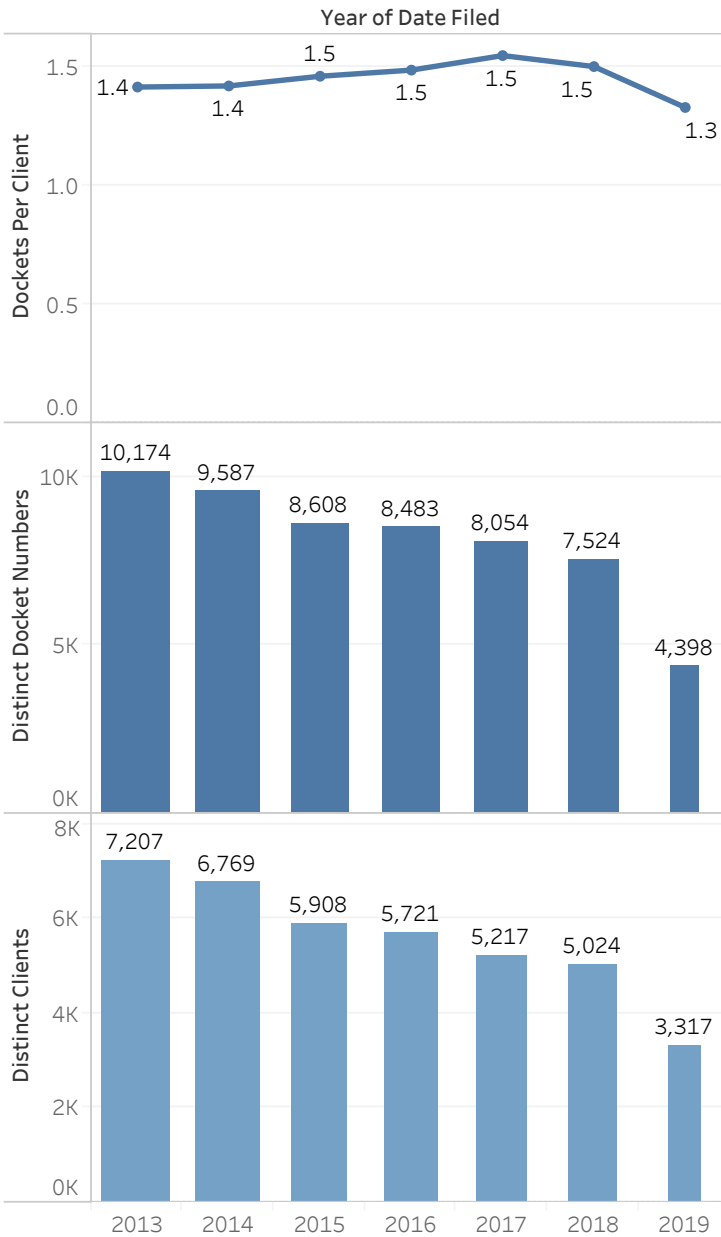
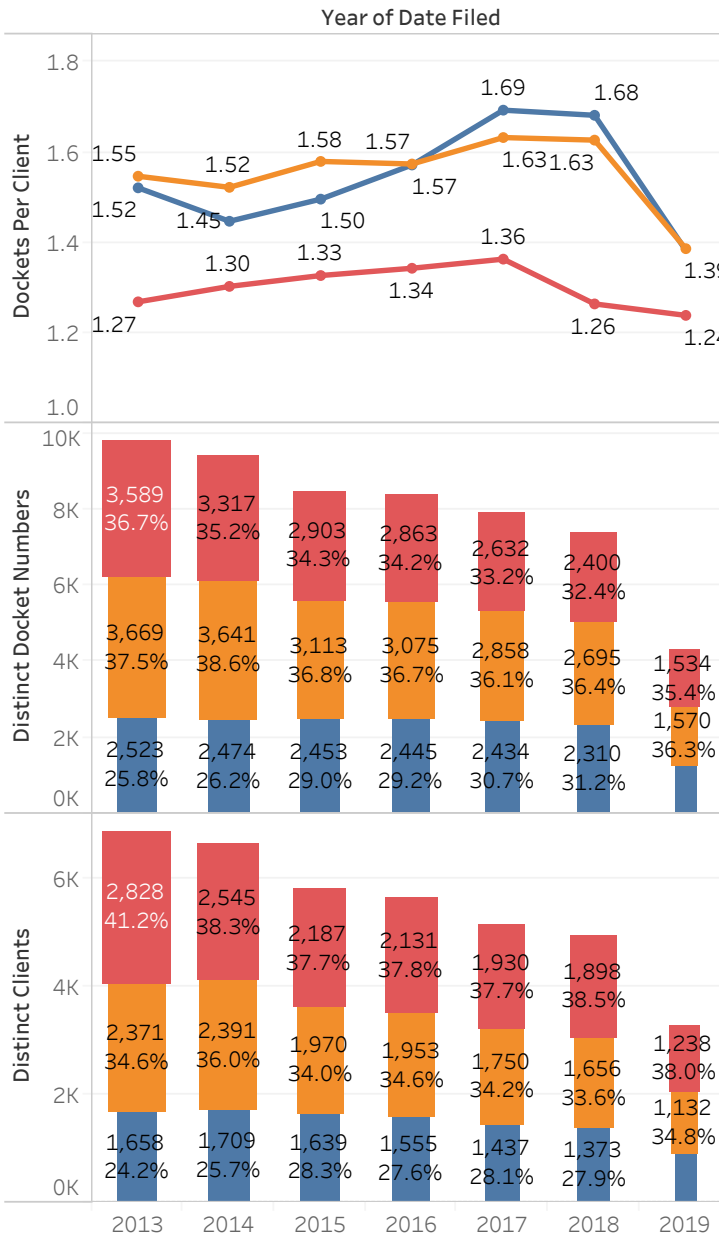


# Juvenile Court Referrals by Year and Race

## Delinquency Referrals and Clients by Year



## Delinquency Referrals by Race



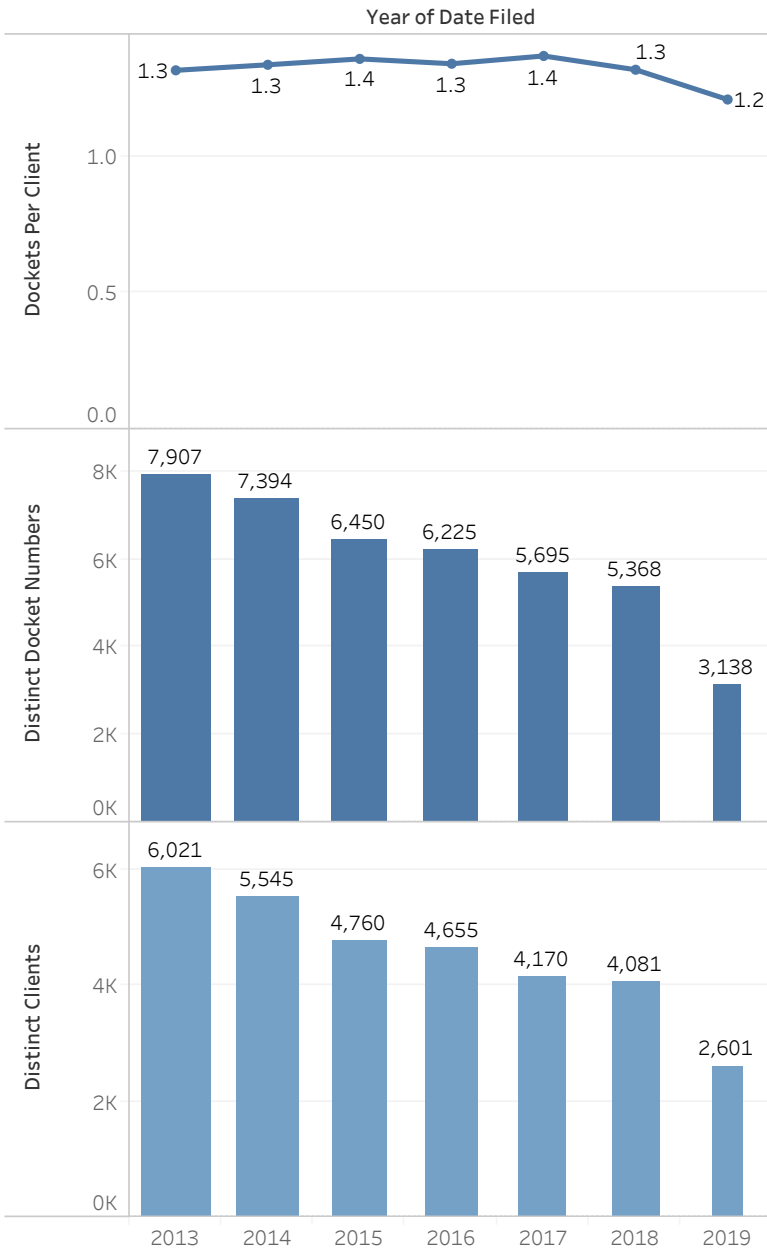
**RaceEthnicity2**

- Non-Hispanic White
- Non-Hispanic Black
- Hispanic

The blue graphs to the left show the decline in the number of referrals to juvenile court (middle), the decline in unique clients by year (bottom), and the ratio of referrals per unique client (top) by year. The total number of referrals or docketnumbers fell 26% between 2013 and 2018 and the number distinct clients dropped 30% while the ratio of referrals per client remained consistent at @1.5. The multi-colored data presents the same information broken out by client race. Here we see declines in the number of court referrals 27% for black clients, 33% for white clients, and 8% for hispanic clients and similar declines in the unique client counts 30%, 33% and 17% for black, white, and hispanic clients. The ratio of docket numbers per client shows black and hispanic clients having a higher number of referrals per client than white clients.

# Juvenile Court Misdemeanor Referrals by Year and Race

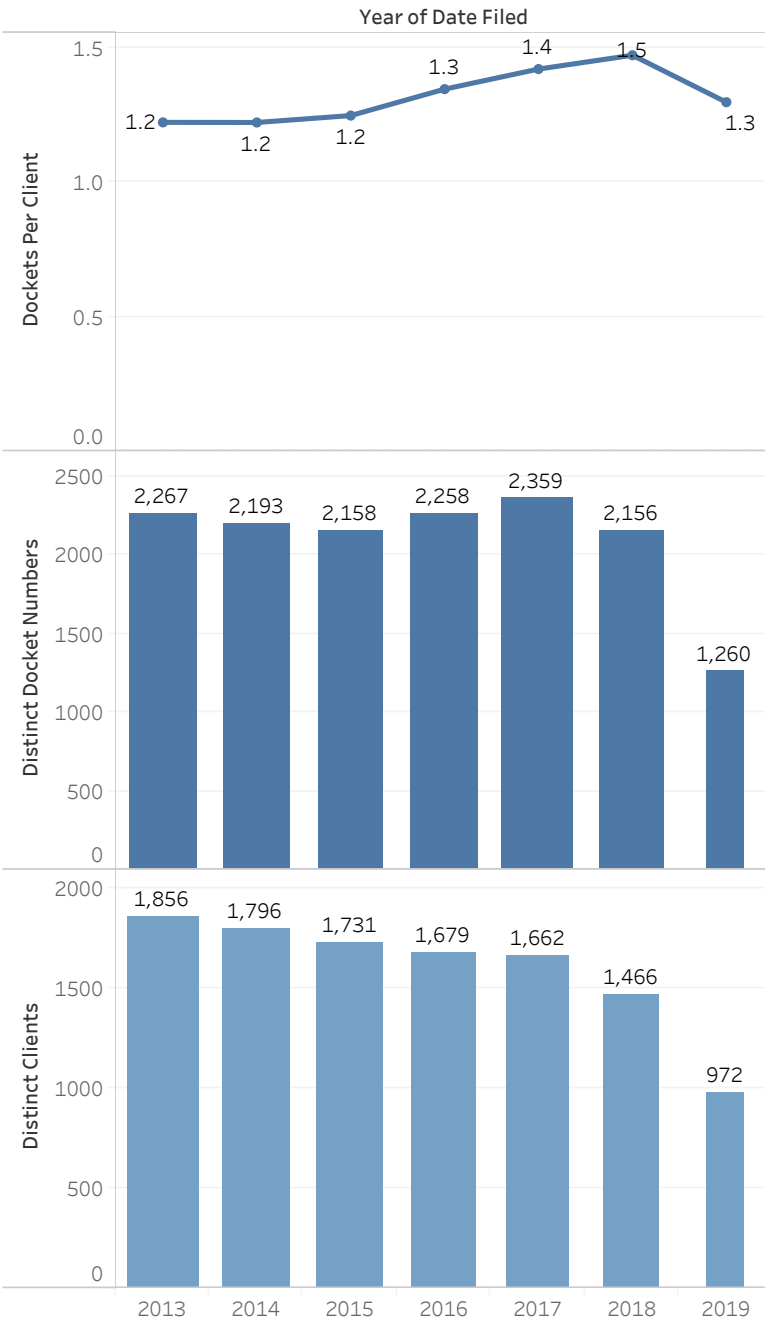
## Misdemeanor Delinquency Referrals



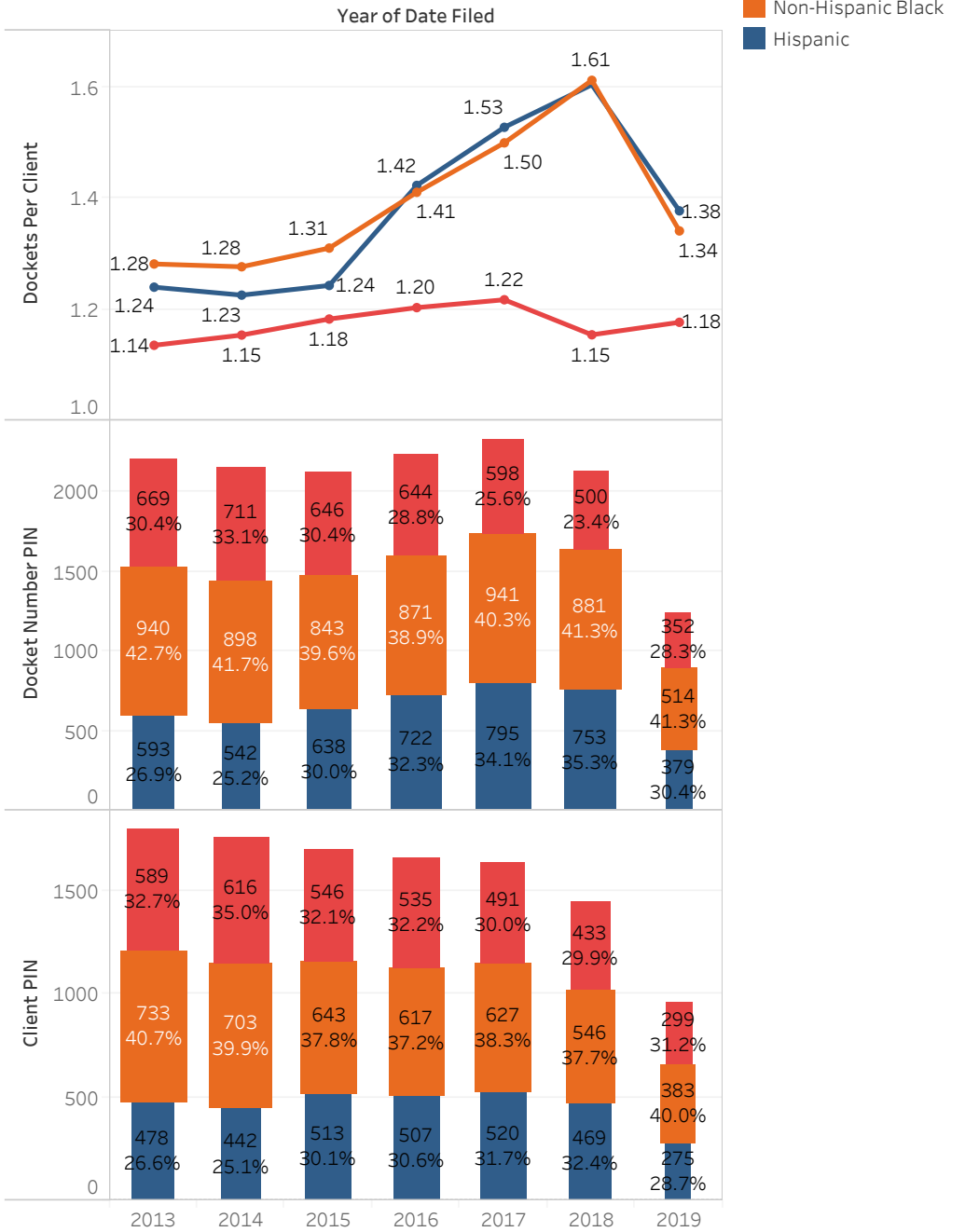
## Misdemeanor Referrals by Race



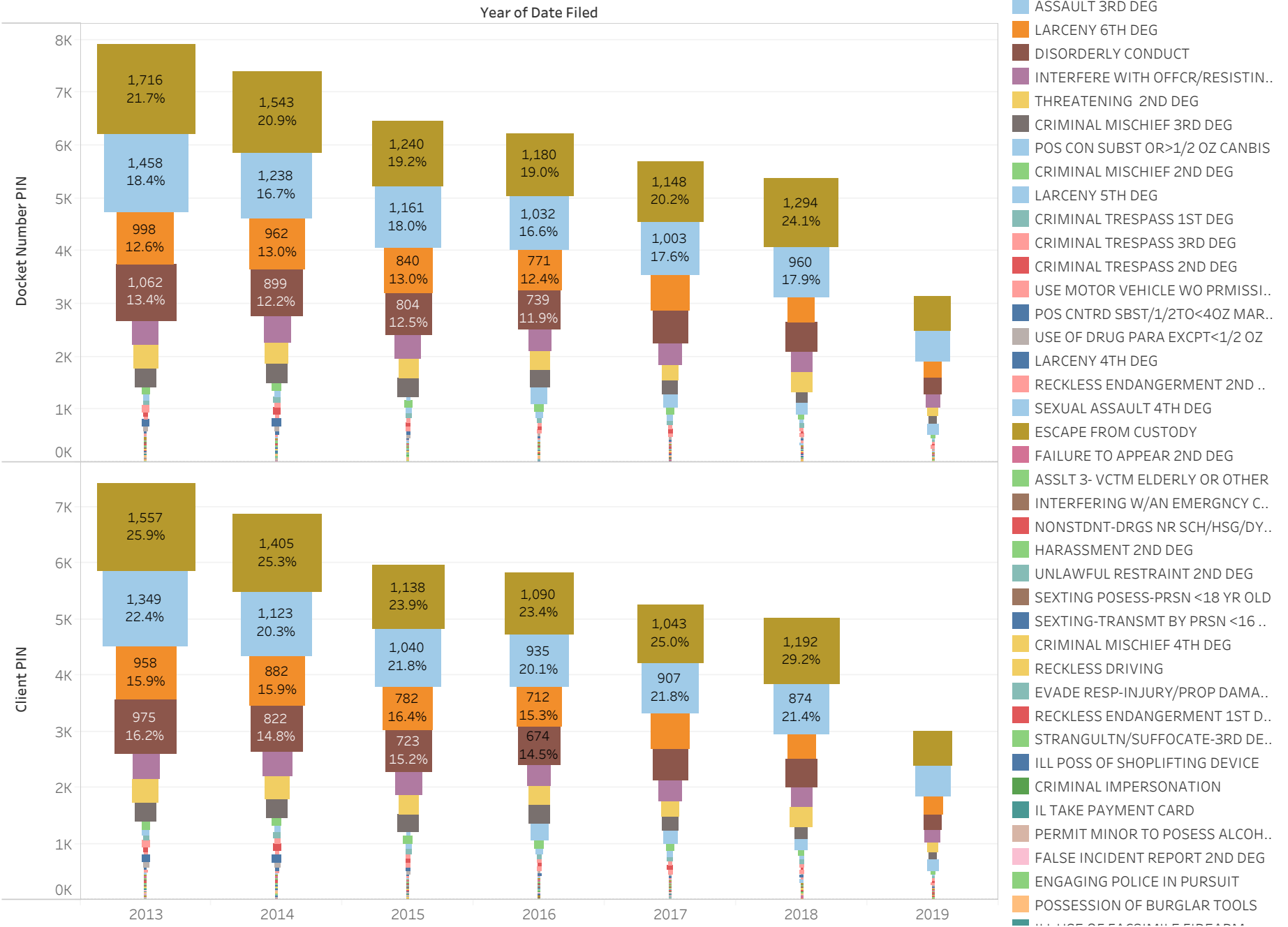
## Felony Delinquency Referrals by Year



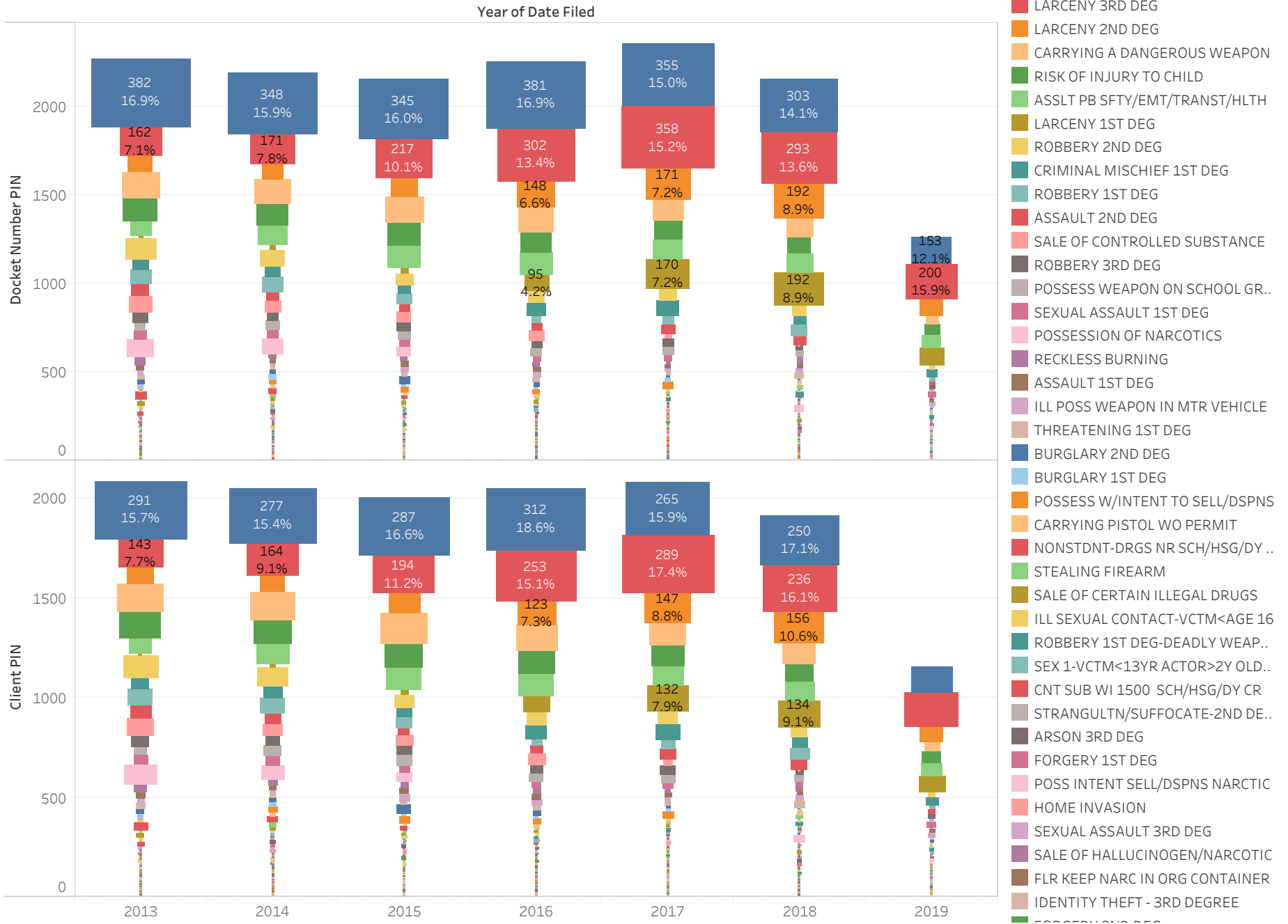
## Felony Referrals



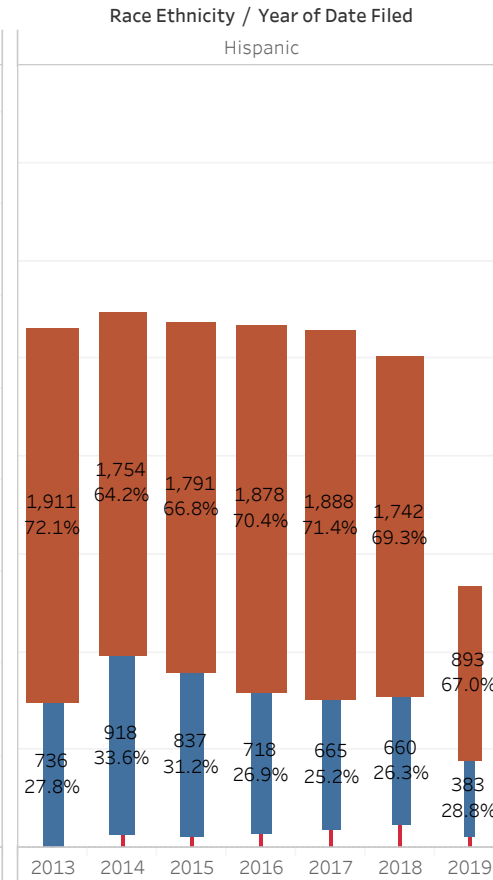
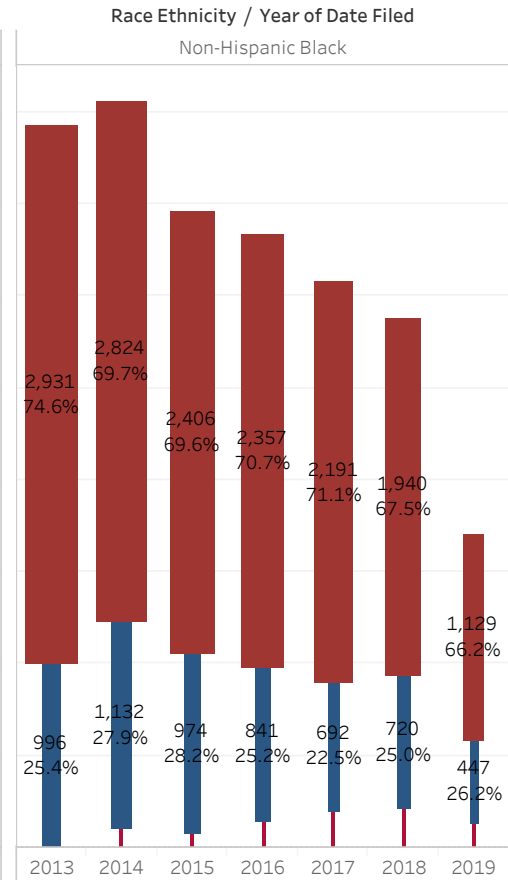
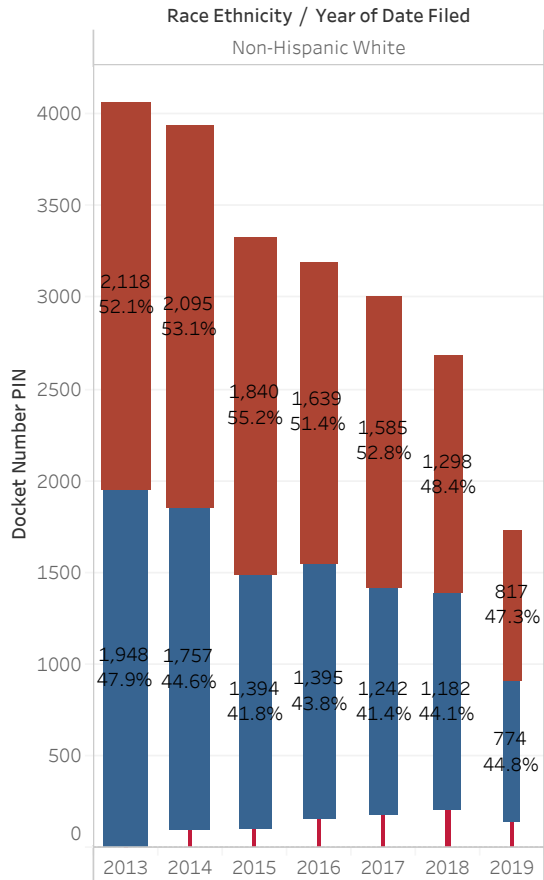
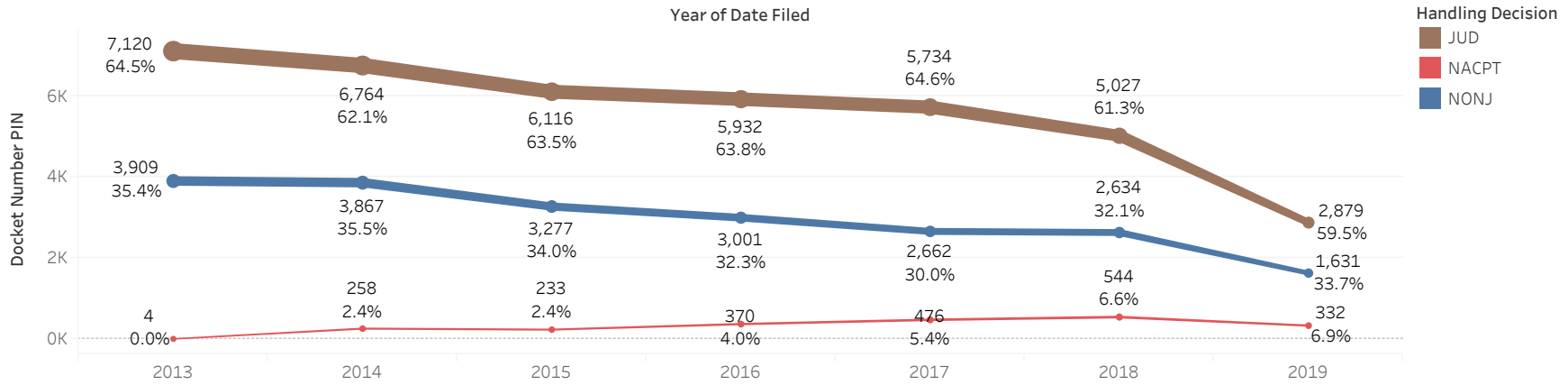
# Delinquency Referrals Most Serious Statute Misdemeanor



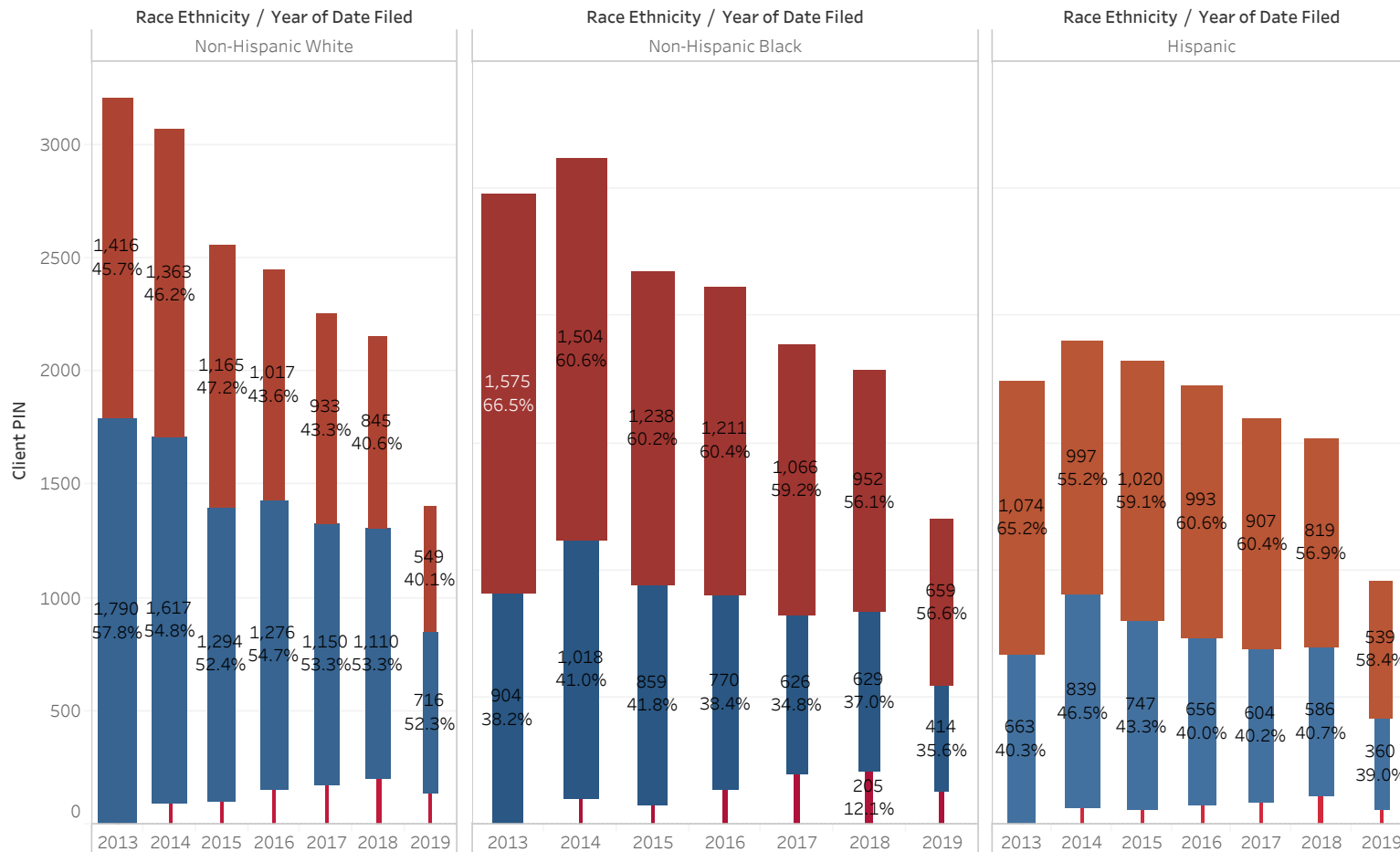
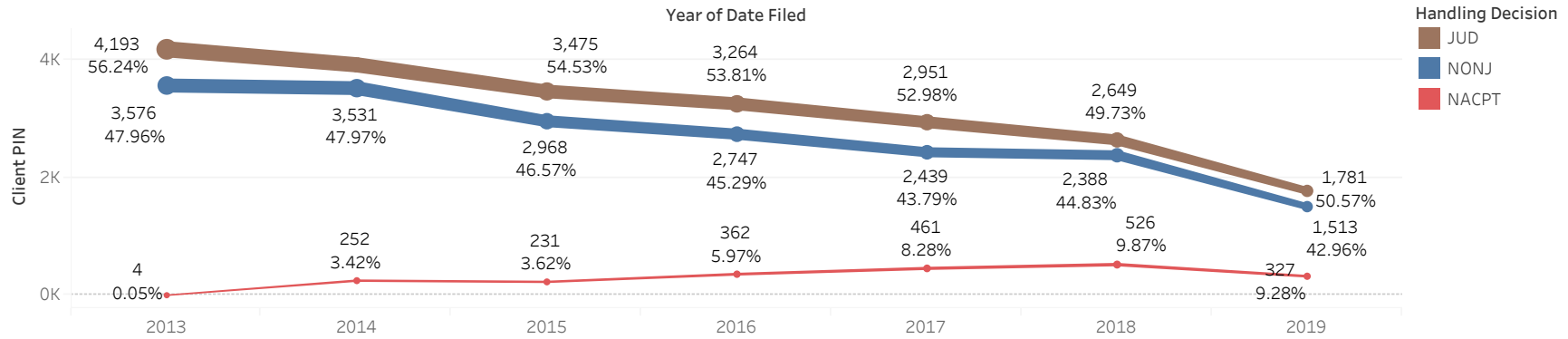
# Delinquency Referrals Most Serious Statute Felony



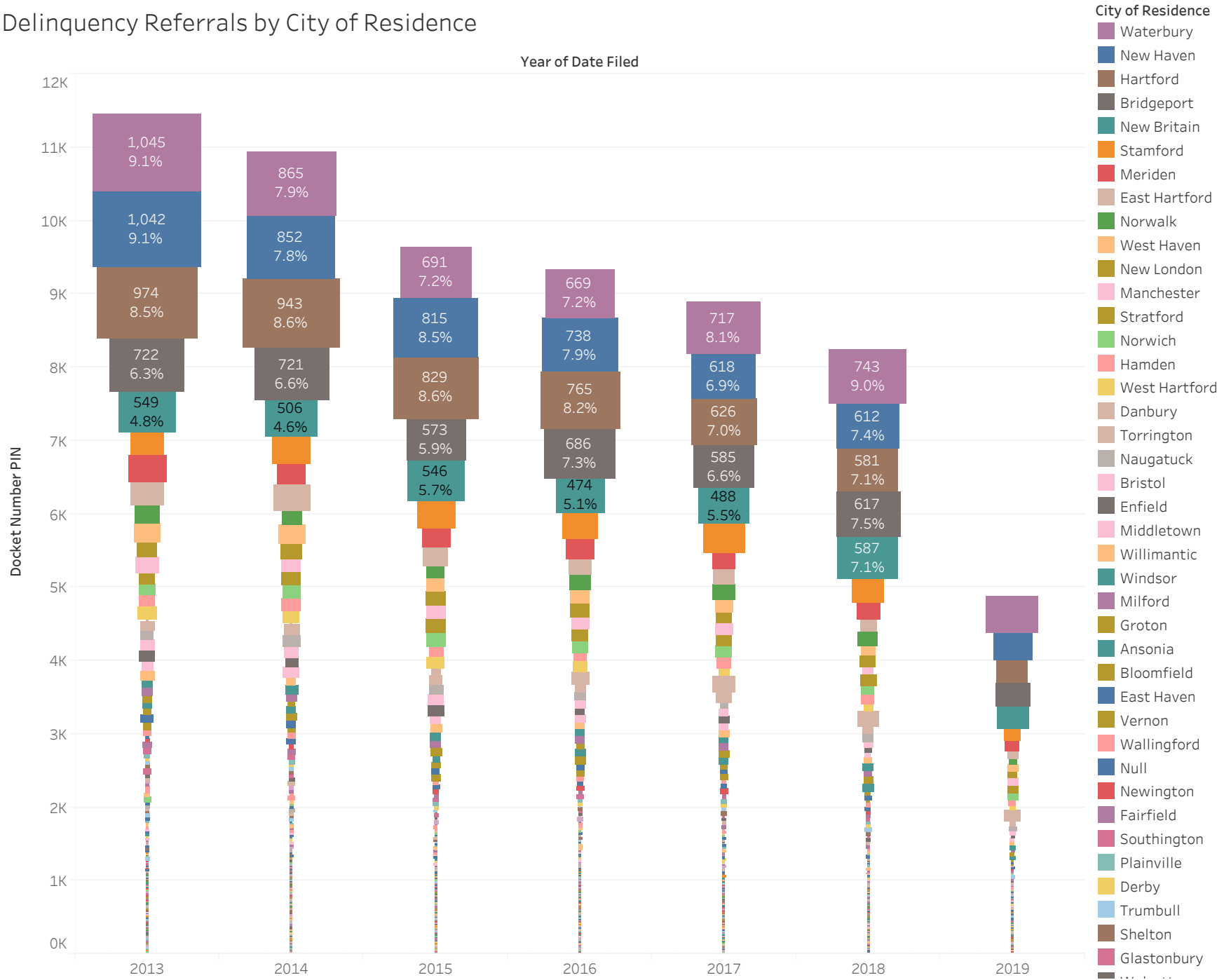
# Handling Decision on Delinquency Referrals By Race



# Handling Decisions for Distinct Clients by Race



# Delinquency Referrals by City of Residence







# Non-Judicial Dispositions All Clients and By Race

